

VPN – Windows Edition

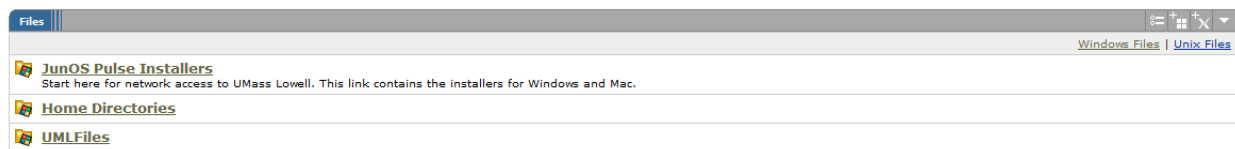
Connecting to the UMass Lowell VPN requires the use of ‘Pulse Secure’, a software package which you must load onto your Windows computer before you can connect to the VPN.

Should you have questions on these directions or using the VPN, please contact the IT Service Desk at 978 934 4357.

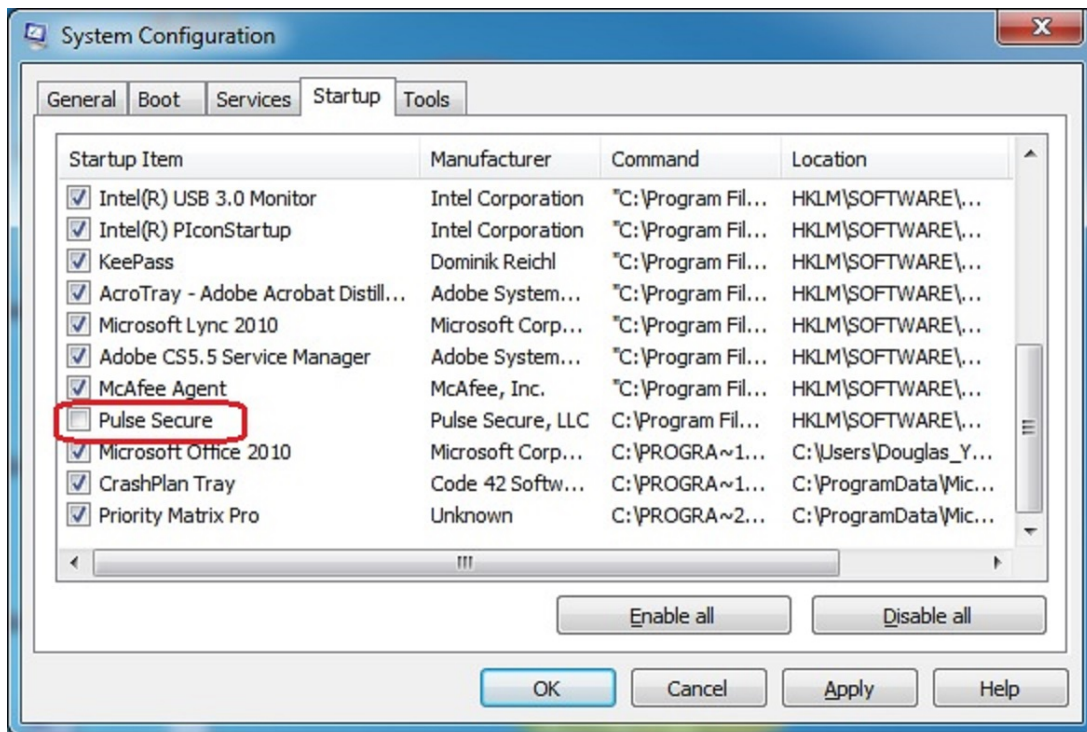
Installing Pulse Secure on Windows:

1. Open up a web browser and navigate to <https://vpn.uml.edu>. Once connected to the site, enter your UML email address and password to continue.

In the “Files” section, click the link for *JunOS Pulse Installers*.

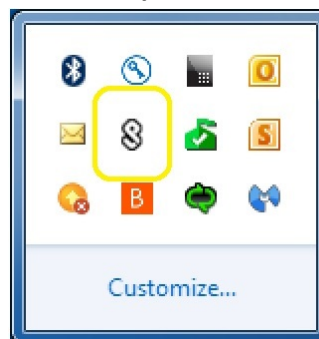


2. Click the *Installers* link, which will open the folder with all of the installers. Click on the appropriate installer for your Operating System to download it to your machine.
 - a. 64bit Windows: choose PulseSecure.x64.msi
 - b. 32bit Windows: choose PulseSecure.x86.msi
3. Log out of the vpn.uml.edu website by choosing ‘Sign Out’ in the top right corner of the website.
4. On your machine, go to the location where you downloaded the installer and run it.
5. By default, Pulse Secure is set up to auto-start with every reboot. If you do not want it to start every time you startup or reboot your computer, then proceed with the following instructions:
 - a. Go to **Start > Run** and type **msconfig**.
 - b. On the **System configuration Utility** window, under the **Startup** tab, uncheck *Pulse Secure*, click **Apply** and then **OK**. Windows will automatically restart.

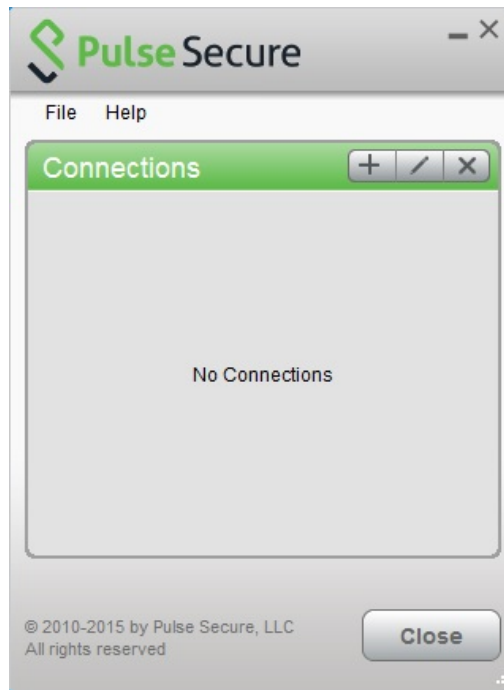


To use Pulse Secure in Windows:

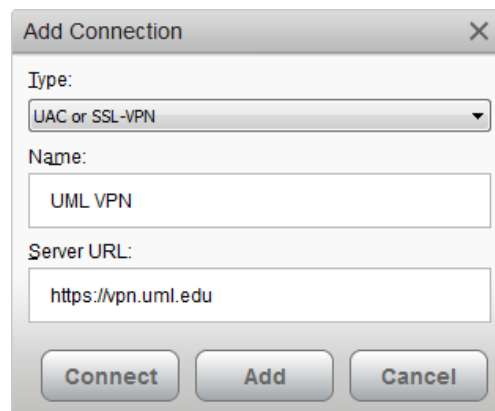
1. Open Pulse Secure either by:
 - a. Go to the Start Menu → All Programs → Pulse Secure → Pulse Secure or
 - b. Expand the *Notification Area* on the *System Task Bar* and right-click on the Pulse Secure icon. From the pop-up menu select **Open Pulse**.



2. In the Pulse Secure program window, click on the “+” button to add a connection.



Fill in the connection information screen with the following information (this only needs to be done the first time you connect to the VPN from this computer)

The image shows a screenshot of the "Add Connection" dialog box. It has a title bar with "Add Connection" and a close button. The dialog contains three input fields: "Type:" with a dropdown menu showing "UAC or SSL-VPN", "Name:" with a text box containing "UML VPN", and "Server URL:" with a text box containing "https://vpn.uml.edu". At the bottom, there are three buttons: "Connect", "Add", and "Cancel".

Click connect



3. After you authenticate with your UML email address password you are connected to the UML Network and can continue to access file shares or applications as you normally would when using VPN.
4. You can minimize or close the PulseSecure window, this will not disconnect you from the VPN.
5. To disconnect from the VPN session, open up the PulseSecure application and click the Disconnect button.